

$A+B$
 Zustand 1+2
 $A2+B1$
 (4)

$B1+$
 Zustand B
 B
 $B \times 1$
 $B+C$
 8
 084

$B \times 1$
 $B \times 2$
 Zustand C
 D

A 1, 2
 A 3

A 4

A 4/5

G/A
 geringe Dichte
 $B2+B \times 2$

G/A
 höher Dichte (Flamm) = hohe Dichte (Fischöl)

Wägelchen
 Wasser
 Reis

Maracas
 Kartenzettel

Einführung: Filter (hochfrequent) + Ger.

~~A+C~~
 Zustand 5 --- + --- D 6 (16)

wahr-wahr
 wahr-wahr
 wahr-wahr
 wahr-wahr

A 1, 2
 (Quass.) 8. B. Röhren

7 --- --- D 6

Filter Curcuma Frequenz - Bpass
 hohe Frequenzen

Filter

Zustände

- A 1. Mikrojoule aus + $m_j \leq$ = A 2
- B 2. Mikrojoule an + $m_p >$ = B 1
- ~~AB~~ 3. Mikrojoule an + ~~Filter~~ $m_j \leq$ = B 2
- BC 4. Mikrojoule an + Filter + $m_p >$ = B x 1
- ~~C~~ 5. Mikrojoule an + Filter + $m_j \leq$ = B x 2

Auswirkungen

1. Variation der Schlägel
2. Variation der Ausstragetechnik
3. % v. neu lang schwingenden Inst.
4. Reiben / Schlagen
5. Gegenstände einfallen
6. Töne
7. Geräusche

Geräusche

Töne

brems

Umkehrtrieb

Original

Spezialbrems

Filter

A S
4
I

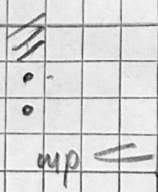
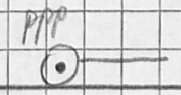
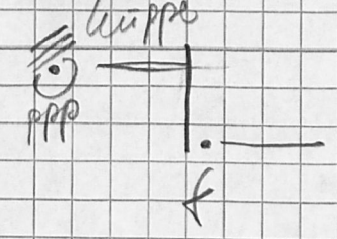
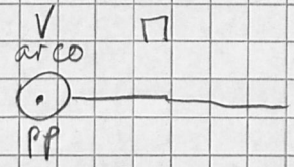
11, 8, 10, 10

F₁ 2 3 4 5
N, west, Bewegung, R x 6, 2 Seiten all

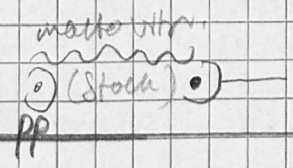
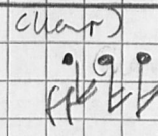
Micro ar

♩ = 45
32"

1

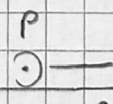
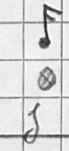


2

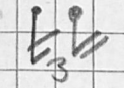
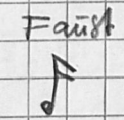
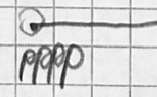
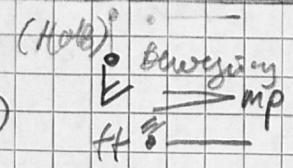
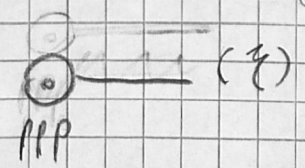


3

C p (weisen) ⊕
A1
AB (hart)
Rim



4



N.
BI
BII
G
O
T
K
B
C
G
C
C
G
A
1
T
D
T
K
V
T
T
(M)
K

12	c	v	.	v	v	c	v	c	v	c
11	.	.	c	.	.	c	x	x	.	.
10
9	v
8	G	.	G	G	x	.
7
6	arco	.
5
4
3
2
1
	X	X	X	X	X	X	X	X	X	X

Filkel

①

A

flute

①

N
BI
DII
G
D
T

$\frac{8}{8}$

②

V
B
C
C
C
G
C

$\frac{8}{8}$

③

V
G
T
T
D

$\frac{4}{4}$ mp

④

T
K
T
V
T
M
K

$\frac{4}{4}$

p

1'04"

II V

III (y)

IV II (y)

(y)

(y)

(y)

(y)

(y)

(y)

Filter

A

1'31"

1'20"

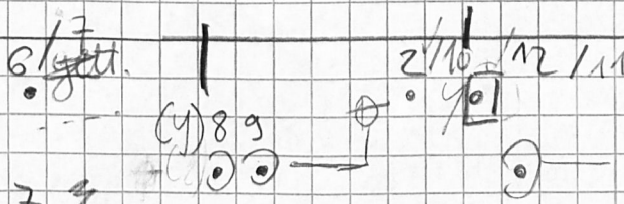
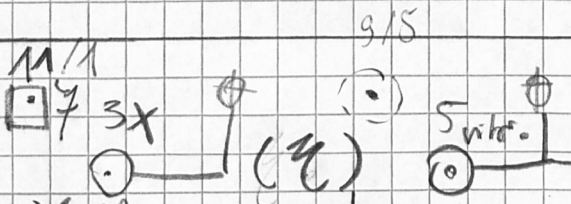
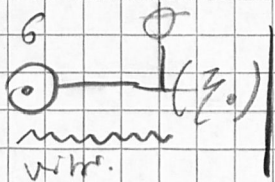
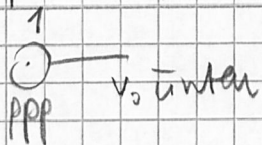
1'28"

1'33"

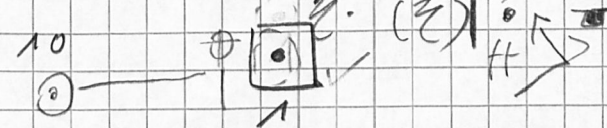
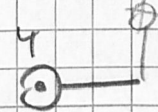
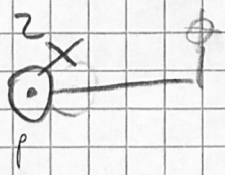
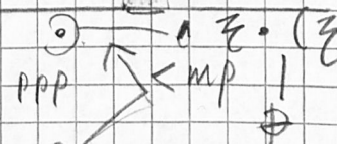
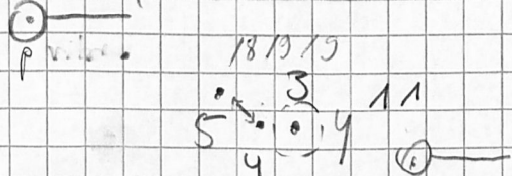
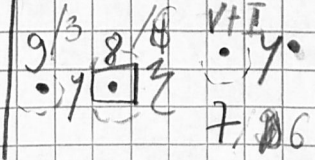
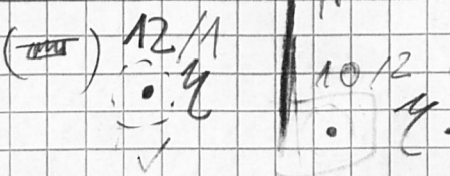
1'40"

1'48"

N
BI
BI
G
H
O
K
B
C
C
G
C
C
G
H
D
K
T
T
V
T
M
K



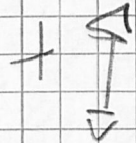
+ pitch-bed



no dot, gett.

1/2/3/4/5

+ ○ — webs



buta, gett.

F, Her

KREUZSPIEL

Karlheinz Stockhausen

Filter

trial 5, 3

♩ = 90

Klavier

rechtes Pedal

4
8

mit den Händen
ppp sempre

II. Tumbas
pppp sempre

Filzschlegel
tr

III. Tom-toms

mf ppp p ppp

Stimmung der 6 Trommeln: Quart-Tritonus alternierend

© Copyright 1960 by Universal Edition (London) Ltd., London

Universal Edition Nr. 13117 LW

bei tr-- immer Akzent in vorgeschriebener Intensität und Wirbel ppp

1 Simultane

Djumbé + Tom Tom

2a

3a

Gro. Tr +

Gro. (##)

3b

1a

Tam Tam +

Gro. (c)

4

2b

Tam Tam + lautert Bayo

4b

2c

2 Gleiche Bewegung + Divergenz

Mattots Streich (Röhre)

Unterbrechung
Kugeln, Wasser,
Reis } Echig +
Röhre

3 Divergenz

Filter "Schreiben"

Aktivität &

+ komplexe Bau.

Filter

Dieses Werk ist dem

jungen / frühen Schaffen Karl Heinz

Stockhausens gewidmet

D e r) t f e l k a r i t h a e e m
 i s k d (r) u a n i u o a u w e
 e w (i e) ü) s) f) k k & c a s i f
 s e s i n h / c f a e s k s g d .

Filter

Nr 54

Wasseraus Maracas, Wasserputzen

Prüfen

B

4 Simultane

Dieube + Tautan

(2) a

(3) a

Tautan + Gang (c)

(4)	(5)	(2) b	(3)
-----	-----	-------	-----

Gr. Tr. + Gang (FH)

(3) b	(1) a
(1) c	

Tau Tau + kerbet-B.

(4) b

(2) c

↓

↓

1 b

3 c

Filku

B

Handwritten musical notation for system B, featuring a treble clef and a key signature of one flat. The notation includes several measures with notes and rests, accompanied by chord symbols: $2a/3a$, $4b/2c$, $3b/1a$, $3b/1a$, $4b/2c$, $3b/1a$, $3b/1a$, $4b/2c$, $3b/1a$, $3b/1a$, and $4/2b$.

Handwritten musical notation for system 4 and 5. System 4 includes notes and rests with chord symbols $2a$ and $3b/1a$. System 5 includes notes and rests with chord symbols $4/2b$, $2a/3a$, and $4/2b$. A triplet of notes is marked with a '3' above it.

Handwritten musical notation for system 7 and 8. System 7 includes notes and rests with chord symbols $3b/2c$, $4b/2c$, and $3b/2c$. System 8 includes notes and rests with chord symbols $2a/3a$, $2a/3a$, and $4/2b$. A circled note is labeled $\text{d} = 68$.

Fille

Handwritten musical notation for system 9, featuring a treble clef and a key signature of one flat. The notation includes notes and rests with chord symbols $4b/2c$, $3b/1a$, and $1a$. A zigzag line is drawn below the notes, and the word "acc" is written below it.

HP, CP, BP, BR
 Schema 1 (HP + CP)

Handwritten musical notation for system 10, featuring a treble clef and a key signature of one flat. The notation includes notes and rests with chord symbols $4/2b$, $4/2b$, $2a/3a$, $3/1a$, and $4b/2c$. A zigzag line is drawn below the notes, and the word "acc" is written below it.

HP

B

Handwritten musical notation on a grid background. The notation includes notes, rests, and various annotations:

- Top left: A measure with notes and rests, annotated with $\frac{30}{11a}$ and $\frac{4b}{2c}$ below it. Below $\frac{4b}{2c}$ is the letter "R."
- Top middle: A measure with notes and rests, annotated with $\frac{2a}{3a}$ and $\frac{3b}{11a}$ below it. An arrow points from $\frac{2a}{3a}$ towards the right.
- Top right: A measure with notes and rests, annotated with "31" above it and $\frac{4}{2b}$ below it. To the right of this measure is another measure with notes and rests, annotated with $\frac{4b}{2c}$ below it.
- Bottom right: A measure with notes and rests, annotated with $\frac{2}{13a}$ below it.

Handwritten musical notation on a grid background, continuing from the previous section:

- Left side: A measure with notes and rests, annotated with $\frac{3b}{11a}$ below it.
- Middle: A measure with notes and rests, annotated with $\frac{4}{2b}$ and "u" below it.
- Right side: A measure with notes and rests, annotated with $\frac{3}{3a}$ and $\frac{4b}{2c}$ below it. Above this measure is the word "Repetitive" with a line through it.

Handwritten musical notation on a grid background, continuing from the previous section:

- Top left: A measure with notes and rests, annotated with "35" above it.
- Top right: A measure with notes and rests, annotated with "41" above it.
- Bottom left: A measure with notes and rests, annotated with "35" below it.
- Bottom middle: A measure with notes and rests, annotated with $\frac{4}{2b}$ below it.
- Bottom right: A measure with notes and rests, annotated with "35" below it.

At the bottom of the page, there are additional annotations: "3a" and "R."

B

41 42 43 44 45

4/20

mp

2a 3b 3b 3b/10

47 DIVERGENZ

senza

48 49 50 51

III IV II IV I

3 4 5 6 7 8 9 10 11 12

T(1)/BP

Filfen

51 52 53 54 55

BP (senza)

1 CBI/GI 2

3 4 5 6 7 8 9 10 11 12

3 4 5 6 7 8 9 10 11 12

3 4 5 6 7 8 9 10 11 12

NB 1 / 4B 2

3 4 5 6 7 8 9 10 11 12

VI I II III IV II+V I+III IV V

Handwritten musical notation for measures 53-56. Includes notes, rests, and a circled '1' with 'guss V-O I' written below it.

Handwritten musical notation for measures 55-56. Includes notes, rests, and circled numbers 1, 3, and 4.

Handwritten musical notation for measures 57-58. Includes notes, rests, and circled numbers 1 and 3.

Handwritten musical notation for measures 57-58. Includes notes, rests, and a circled '1'.

Handwritten musical notation for measures 57-59. Includes notes, rests, and circled numbers 3 and 4.

Handwritten musical notation for measures 57-59. Includes notes, rests, and circled numbers 1 and 2.

Handwritten musical notation for measures 61-65. Includes notes, rests, and circled numbers 1, 2, 3, and 4.

B

67 D ③

T ①

69

CB ③

4 F 4 2

4 d 4

4 F 4 d 4

T ① / DB ②

0

F F d F 4 4 F

D ② ①

64 C III ③

4 d 4

4 4 4 5 4 4

71

73

4 T 3
KT (Spartan) C II

CB ③ 61 ②

F T d T

F F F T 2 4 F 4 4 T T

T ④ T ④

F 4 4 4 F 4 4

75

NB ①

FILTER 78

4 4 T T 4

F F T d T

T ④ D ④ M modco

4 4 4 F d d T d 4

Filter

79

81

64 KT ④ (SMT -)

4 4 4 4

4 4 d 4 4 4

64

fall TT ③ ④

4 T 4 F 4 4

4 F d T ① T F 4

BI ①

CK ③

4 4 d 4
KB ②

B

83 (V4) Roll - 85 NB (1)

$\begin{array}{c} \overline{y} \overline{F} \overline{FF} \downarrow \overline{FF} y \overline{Fy} y \square \end{array}$
 \downarrow
 $\begin{array}{c} d. \overline{FT} \overline{Fy} y y \overline{yT} \downarrow y \downarrow y \overline{y} F \end{array}$
 \downarrow
 $+ D (1)$ $\text{C IV } (3)$ $\text{C III } (3)$

87 | G (1) 89 T (1) BP (2)

$\begin{array}{c} \square \overline{Fy} \downarrow \end{array}$ $\begin{array}{c} \overline{y} \overline{F} \overline{FF} \overline{FF} \downarrow \overline{FF} \end{array}$
 \downarrow \downarrow
 $\begin{array}{c} \text{G.4} \\ y y \downarrow y \quad y y \downarrow \end{array}$ $\begin{array}{c} T (1) \\ \text{CB } (3) \end{array}$
 B II $\downarrow \overline{FF} \overline{FF} \downarrow \square \square$

91 + 37/4

$\downarrow \square$
 $\text{GT } (3)$